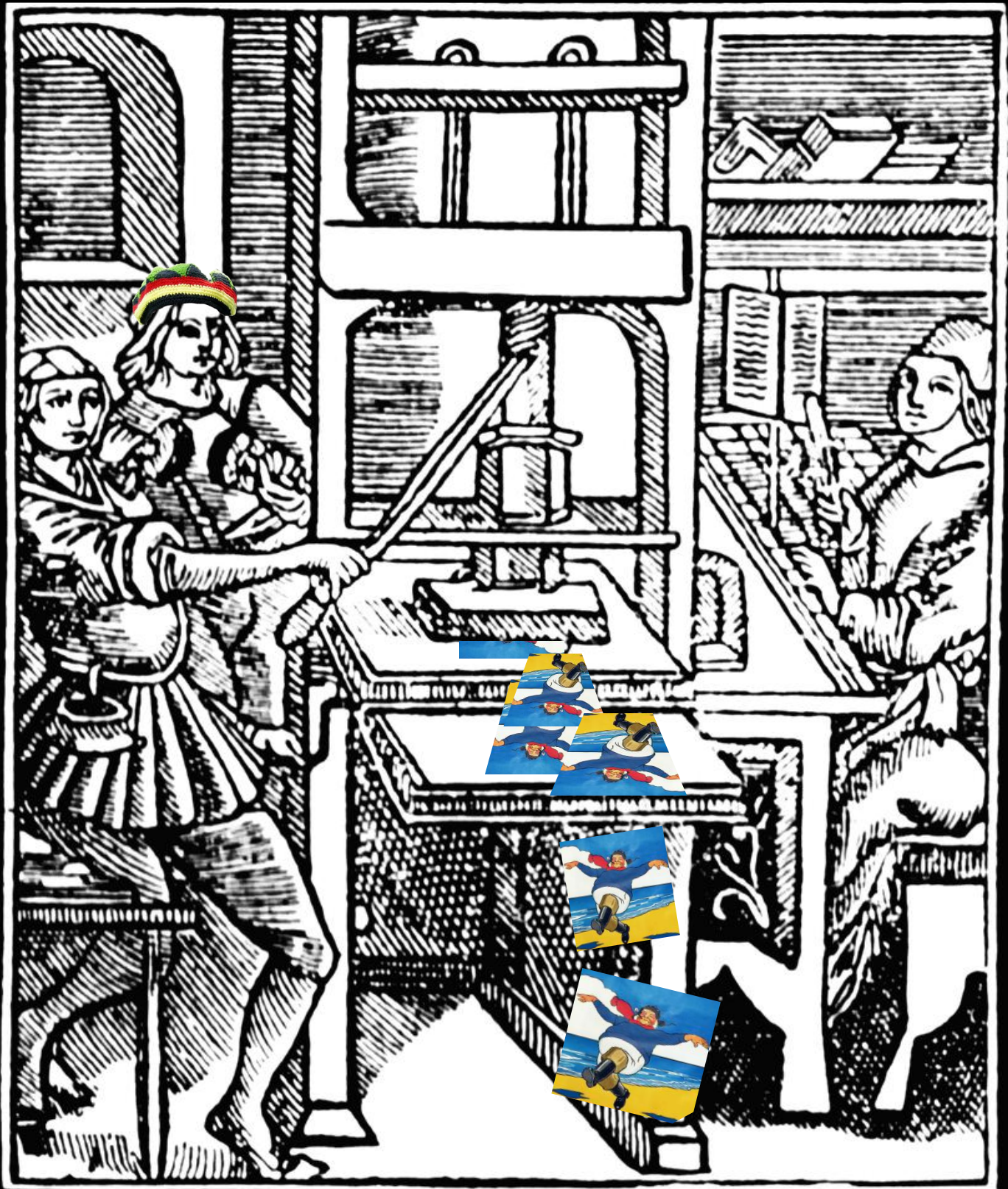


De Olde Hinxton News



October 2017 issue 405



From the Editor

Dear Readers,

Petra Shakeshaft, our long awaited and newly invested priest-in-charge, was warmly greeted by a large group of villagers (and an impressive array of tasty nibbles) in the Village Hall on the 16th of September. We sincerely hope that Petra and her family enjoy our lovely village.

Andrew and Virginia Walker represented our village to cycle an impressive 3 hours and 20 miles and 25 churches, raising funds for Cambridgeshire's Historic Churches Trust. Fab. *Come on folks! Is never too late to make a donation (p.14)*

The Wellcome Trust Sanger Institute have announced a scientific project to sequence the genomes of 25 indigenous species to commemorate their 25th anniversary. (p.17) The villagers of Hinxton are invited to participate in making the final selection from the five categories of flora and fauna– Cryptic, Flourishing, Floundering, Iconic and Dangerous. *My vote goes to the Saffron Crocus.*

The NEWS will keep you updated on the North Uttlesford Garden Community idea. p.3 sets out the argument against it based on the impact such a development would have to the locality. No-one disputes the need for new housing but its has to be suitable and befitting the environment.

The next big fight will be SmithsonHill, so please stay watchful.

Suddenly we appreciate that Christmas is looming when we get the announcement of the shopping spree (p.7) the Children's Xmas Party (p.16) and also the pleasing return of the Peterhouse Choir who will perform a concert of Carols for us in the church (p.15) . *I love these guys and this one will be very special ,so please come along.*

Bingo season is upon us again, so, "Get yer dibbers out !"

Mike & Theresa

Very Late News....

McMillan Coffee Morning once again raised over £900.

Fabulous effort.

CONTENTS

4/5

Church News

7

Shop & Drop

8/9

Fireworks

13

Bassingbourn School in Africa

18/19

Council News

21

Art Exhibition

24

Diary & Calendar

Mike Boagey 85 High Street, Hinxton CB10 1QY 530216 jaboagey@gmail.com

Theresa Sullivan 89 High Street, Hinxton CB10 1QY 531533 news@hinxtonvillage.co.uk

Hinxton News is an independent village newsletter, established and run by volunteers.

Copying facilities and paper are generously provided by the Wellcome Trust.

Its mission is to inform residents of local issues and to maintain and promote community spirit.

The News has a current circulation of approximately 170 and is delivered free of charge to all Hinxton households.

Disclaimer

The Editors are not responsible for the opinions expressed by contributors, nor do they accept responsibility for the accuracy of information contained in the advertisements

Update on the North Uttlesford Garden Community

The proposal for a substantial new town on the hills just across the A11 from Hinxton made its unexpected appearance earlier this year in Uttlesford District Council's revised Local Plan. The first phase of consultation, in which people sent in comments, ended early in September. There was an impressive response with several hundred objections from individuals and organisations. They can be found on Uttlesford's website. These included strong comments from the parish councils of Hinxton and our neighbouring villages in South Cambridgeshire. The objections from **Hinxton Parish Council** focussed on five main issues. The first was the traffic implications of a 5000-home settlement accessed exclusively from the Stump Cross roundabouts on the A11. The proposal lacked any traffic evidence, and it implied a severe increase in congestion in South Cambs on the A505 and A1301 and rat-running through our villages. It offered no additional finance to mitigate the problem. The second issue was the consequences of a town on the hills above the Cam valley that would increase flooding risk for our villages downstream. Whatever precautions might be taken to control run-off, the fact that about a square mile of largely impermeable urban surface would be placed on what is currently open fields inevitably means that less water would infiltrate

In making our fourth objection, about damage to the scenery, we noted the comment made only two years ago in the report of the inspector who rejected a small housing proposal on the old airfield above Hadstock, just a mile east of the NUGC site. The report castigated it as 'a discordant addition to the rural landscape'. Finally, we criticised the complete lack of financial provision for the added burden on infrastructure – schools, surgeries and so on – that would fall on South Cambs.

Statements about 'garden' principles were meaningless unless a substantial part of the massive resulting increase in land value was to be allocated for public infrastructure, shared with South Cambs. It would also be absurd if the proposed 'social housing' were restricted to current Uttlesford residents.

It is now up to Uttlesford District Council to decide whether to continue with their NUGC proposal in the next stage of the Local Plan process, which should be published over the winter. If they do, we shall have to re-enter the fray afresh. The new agents managing the proposal on behalf of the landowners are Grosvenor Estates; in the next stage they will produce far more detailed plans. The question then is whether these can meet the many objections sufficiently well to impress the official

NEW TOWN? NO WAY!

into the soil and more run-off would occur. Which led to our third objection. Cambridge Water, on which our supply depends, relies almost exclusively on ground water from these chalk hills, unlike Affinity Water, which serves Uttlesford from other sources. The Environment Agency 2017 map of groundwater protection zones makes clear that the proposed site is one of zone 1 (red), zone 2 (green) or zone 3 (blue), priority water sources. Both the supply and purity of Cambridge Water's aquifers would be seriously endangered.

inspectorate. Given the political tangle apparent within Uttlesford, the inspector's views are likely to be what decides this in the end.

Meanwhile, the group based in Great Chesterford will continue its campaign against the proposal under the new name StopNUtown Action Group, with punchier banners.

Hinxton Parish Council will continue to work closely with our neighbouring parish councils, as well as with our District and County councillors and our MP, to avert this serious threat to our village.

Willy Brown and Dick Jones

The Children's Society

Box Collection 2017

When the boxes were opened in July and August the grand total amounted to £160.00, which was a small improvement upon last year. My sincere thanks to our local supporters for their generosity and a gentle reminder that the old 'round' pound coins should not be added to collecting boxes from now on. If you would like to help change the lives of our country's most vulnerable young people, by putting your small change into one of our special boxes, please contact me at any time'

Julie Baillie, Local Rep. For the Children's Society
01799 530684... or
email george.baillie43@btinternet.com

An invitation to

All-Age Harvest Festival Service

followed by lunch in the Village Hall

Sunday 15th October

11.00 am

Any contributions towards the food can be dropped off at the Hall from 9.00am. Please can we ask that these have a fairly long 'sell by/use by' date, as it may not be possible to distribute them immediately.

All dry-food donations will go to **The Cambridge Food Bank.**

There will be an opportunity to make a donation to Christian Aid at the end of the meal.



THE ROYAL BRITISH
LEGION



In accordance with tradition,
Sarah, Mary and Ros will be making a door to door
collection from the end of October for two weeks.

Many Thanks
Sarah-Jane Pearson



At last, we arrived in Duxford at the beginning of August with a month to unpack, settle down, have a holiday and rest before I took up the reins as priest-in-charge of Duxford, Hinxton and Ickleton churches (with Whittlesford and Pampisford) on 4th September. At the beginning of August I seemed to have an empty space to look forward to and yet looking back it was very full.

I wonder how you spent August - Maybe sandy beaches and sunshine, maybe trekking up hillsides, maybe cold beers under the shade in a continental town square, or sipping wine with friends in a garden. Or perhaps you dream of ice creams, tents, sparkling hotels or shabby guest houses, sand between your toes, castles, cool church interiors ... hopefully feeling rested and refreshed and ready to begin the new round of work rest and play. Periods of rest and refreshment are vital to our sense of wellbeing and keeping a healthy life/work balance. But we shouldn't just wait for our holidays, it's something we should try to build in to our daily life-pattern.

The whole creation is governed by pattern and rhythm; the seasons, the phases of the moon, the tides, the weeks, the day the night. We need a rhythm of sleep, physical work, mental stimulation, reflection and leisure to function well.

And so, after the rest, it was good to get back to work at the beginning of September; to see the children going back to school, to feel the excitement of another year beginning and anticipate the unfolding of the church calendar too. Already we are celebrating harvest throughout October, closely followed by All Saints and All-Souls and Remembrance Sunday and before we know it, it will be Advent and Christmas. And so I look forward to meeting many of you around the villages and at some of the celebrations and commemorations over the coming months.

Petra Shakeshaft

petra@hinkledux.com

CHURCH SERVICES IN OCTOBER

Sunday 1st - 16th after Trinity

8.00am Holy Communion (BCP) *Duxford*
10.00am All Age Harvest Thanksgiving & Parish Communion *Ickleton*
6.30pm Evensong (BCP) *Hinxton*

Sunday 8th - 17th after Trinity

8.00am Holy Communion (BCP) *Hinxton*
10.00am Harvest Thanksgiving & Parish Communion with URC Duxford
5.00pm Taize Service Ickleton
6.00pm Youthinc *Hinxton Village Hall*

Sunday 15th - 18th Sunday after Trinity

8.00am Holy Communion (BCP) *Ickleton*
10.00am All Age Harvest Thanksgiving & Parish Communion *Hinxton*
6.30pm Evensong with Laying on of Hands *Duxford*

Sunday 22nd - 19th Sunday after Trinity

8.00am Holy Communion (BCP) *Hinxton*
10.00am Parish Communion *Duxford*
6.30pm Evensong (BCP) *Ickleton*

Saturday 28th

Craft Café in St Peter's Church
Coffee, cakes, conversation and craft for all ages.
Leaf printing/rubbing for children

Sunday 29th - Last after Trinity

10.30am 5 Parishes Service *Whittlesford*

Thursday 2nd November – All Souls Day

7.30 St Peter's *Duxford*

A Special service of Remembering and Thanksgiving for those who have died.

A chance to reflect, to pray and to light a candle.
If you would like your loved one named during the service, there are lists in each of our churches
or you can email Petra petra@hinkledux.com

You will be most welcome at any of the above services.

Have you heard



Advanced hearing
technology now
available right
here in
Cambridge

Why not contact Trevor's
team today to book a FREE
hearing assessment and
FREE 30 day trial ?
Call **01223 661399** or
info@angliarhearing.co.uk
or simply drop in and see



Suite 3,
Grain House
3 Mill Ct
Great Shelford
Cambridge
CB22 5LD



angliarhearing.co.uk



HADSTOCK SILVER BAND AUTUMN BRASS CONCERT

IN AID OF ST MARY'S CHURCH,
SAWSTON

7.30pm SATURDAY 21ST OCTOBER 2017
ST MARY'S CHURCH,
CHURCH LANE,
SAWSTON,
CB22 3JR.

Tickets £5
On the door or in advance (contact:
stmaryssawston@btinternet.com)



“talking grass”

for beautifully made homewares, stationery and gifts



visit **www.talkinggrass.co.uk**
and learn why grass is a versatile
and inspiring plant we couldn't
live without !

Save on delivery ! Local pickup
in Hinxton and Cash on Collection
options are available at checkout



Living Room International

by Kate Riley

When you buy your £5 ticket for the shopping event at the Village Hall on Nov 9th you will be

supporting the hospice care run by Living Room International. Thank you.

You may remember when I wrote about Kimbilio, a Hospice in Western Kenya – one of very few in the whole of Kenya.

I met the directors of Kimbilio when I was settling the affairs of my late Mother in law In 2015. They were able to buy our land at a favourable rate with a view to building a second Hospice. Since then I have followed their progress avidly online and with occasional emails from Juli who is my key contact.

Our home was selected to become a second hospice just outside Eldoret. This new Kimbilio Care Center will be nearer to the newly opened cancer clinic in the town, which provides care to nearly 700 individuals a month. At Kimbilio the care is free to all with terminal or health care needs that cannot be met in local government hospitals. For most of the patients, the care is for comfort and dignity in dying; for a few it is care that saves life.

In this new Hospice there will also be rooms for some fee paying patients, so as to provide some revenue to the Hospice. When I last visited, the plans were drawn-up and approvals being sought while fund raising continued in earnest. Living Room International's new facility in Eldoret will house a 52-bed inpatient hospice for adults and children, funeral home services for the community, and an education center to train health-care providers and to engage in research activities related to palliative care. This year building work has started and I hope to make a return visit early in 2017.

The website (www.LivingRoomInternational.org) is updated monthly by Juli in her blog. For example;

May 2016; 7 children and baby Ryan were orphaned when their Mother died of cancer. (Jackline Jepkoech – 19 Years; David Kipruto – 17 Years; Isaiah Cheruiyot – 14 Years; Vivian Jerop – 12 Years; Sharon Jepkorir – 10 Years; Alice Jepkirui – 7 Years; Geoffrey Kiplagat – 3 Years.) Baby Ryan was a few days old and weighed 3 pounds eight ounces so Kimbilio stepped in. Some practical needs the children have include: fees for medical care, food, school fees and uniforms, diapers, and formula. We are hoping to raise \$10,000 to help meet these needs. Thank you, in advance, for your love and support. March 2017 Juli wrote about Charlene who first came to Kimbilio in 2011 starving and ill. She has severe cerebral palsy and is dependent on others for everything. She has since blossomed under their care and now it is her laughter that comforts the others.

July 2017 we heard about Sharon who came to Kimbilio as a 9 year old referred due to malnutrition. She was supported, recovered and returned home; she was later supported again when her Mother died and she needed surgery for severe burns on her hands. She has since been placed at school where she is now happy and doing well. Kimbilio now has 13 orphans they are supporting at the school. You are welcome to join in loving them by giving the precious gift of education. If you are interested, please email Juli

at: atarus@livingroominternational.org for more details.

In 2009, Living Room Ministries International was established to address the many injustices that remain for those living with life-threatening illnesses in Kenya.....' Our goal is to achieve the best quality of life for individuals and families facing advanced disease.

Asante sana (thank you).

SHOP – AND DROP A DONATION

A CHARITY shopping evening is coming to Hinxton Village Hall on Thursday November 9th

Following on the success of the first shopping fundraiser in aid of the UK motor neurone research charity, the Village Hall Committee has been encouraged to organise another. It is delighted to support a new hospice in Kenya, suggested by Kate Riley who lived there till 2003 and is a devoted champion of Living Room International. This organisation aims to provide a haven for men, women and children of any faith who need the care which district hospitals are not in a position to provide, for most that means comfort and dignity, support for bereaved families and orphaned children.

In the meantime, committee members are lining up a talented range of local craftsmen and women, delicious produce and sweet-smelling treats to delight the senses, ideal for gifts and decidedly low on travel expense.

Walk to the village hall and shop from 7-9pm on the night and £5 will buy you an entry ticket – which will go straight to the charity and entitle you to a glass of wine and nibbles to keep your bargain antenna primed.

Stalls will be selling lovely greetings cards, limited edition prints and paintings, homeware, domestic items from a blacksmith, handicrafts, produce using Saffron and even tasty breads and buns to list just a few.

REMEMBER, REMEMBER...THE NINETH OF NOVEMBER!!

It's That Time Again.....



The bacon will be sizzling and the coffee pot steaming.

Where ? ...The Village Hall

When?October 8th 10-12

YES.....

It's Bacon Brunch !

FIREWORKS and BONFIRE NIGHT
1st Whittlesford and Duxford Scout Group
Saturday 4th November

At grounds on Hinxton Road, Duxford behind Hexcel/Hunstman near the level crossing - just follow signs.

Spectacular, professional display by White Lightning Pyrotechnics
Huge bonfire, BBQ, cakes, hot drinks, mulled wine & glow necklaces.

Gates open & food served from 5 pm

Bonfire lit at 5.30 Fireworks start at 6.30

Gates closed to incoming traffic from 6.15

Tickets from Ickleton & Whittlesford and Duxford shops from 16th October:
Adults £3.50, Children (under 18) £2, Family £10 [£4, £2.50 and £12 at the gate].

Pre-school children Free!

Plenty of free parking

Proceeds in aid of the Scout group - every penny raised will go towards equipping our newly built hut.

For more information about the 1st Whittlesford and Duxford Scout Group go to www.wanddscouts.org.uk

FREE FIREWORK DISPLAY AT THE GENOME CAMPUS!

The Genome Campus Sports and Social Club are holding their annual Fireworks display at the Genome Campus on **WEDNESDAY 8th November** at 7.00pm. As always, all residents of the surrounding villages are very welcome to attend. This year, the show will again be fired from the cricket pitch, with spectators asked to congregate on the grass area on the opposite side of the lake between the Sulston Building and the Conference Centre.

To minimise the need for vast numbers of people to negotiate the site, catering for this year's event will be on the main lawn – there will be a Hog Roast van offering roast pork baps and an alternative option for vegetarians. There will also be a van offering a large variety of sweet and savoury crepes and hot drinks, a chip van, a pizza stand and Nanna Mexico will also be in attendance. We are also intending to offer hot drinks, cookies and flapjacks from our recently refurbished Conference Centre.

Food will be available from 5.30pm until the firework display starts at approximately 7.00pm.

There are parking spaces available for those who need to drive. If you are going to attend, please make sure that you get there in plenty of time – due to the safety measures that have to be in place for this event, access to the cricket pitch area of the grounds will be strictly forbidden. Access to the grounds over the Wetlands Nature reserve and through the large gates to Hinxton will be available. Please note that access across the Wetlands bridge from Ickleton will be prohibited after 6.50pm due to safety reasons and spectators will be asked to view the display from the bridge itself.

If you have any questions or queries please feel free to contact either:

Neil Marriott – email nm1@sanger.ac.uk

Heather Bevan-Hunt – 01223 499936, email hbh@sanger.ac.uk

GCSSC – gcssc@wellcomegenomecampus.org

REALLOCATION of ALLOTMENTS

We are reallocating allotments this autumn and anyone interested please contact the Parish Clerk hinxtonpc@gmail.com and send a copy to Willy Brown William.Brown@econ.cam.ac.uk & also to Steve Trudgill stt21@cam.ac.uk Steve will be happy to show you which plots are available.

Vacancy on Hinxton Parish Council

A vacancy has arisen on the Parish Council. This may be filled by co-option until the annual election next year. Anyone of voting age living in the parish is eligible. The duties are not onerous. They involve attendance at the regular evening meetings on the second Monday of every other month, and miscellaneous other business, much of which is dealt with by emails.

If you are interested you should inform the Parish Clerk, Anne Angell <hinxtonpc@gmail.com> and attend the next meeting of the Parish Council on Monday 13 November at 7.45pm. You will be most welcome. If you would like to know more about what is involved, please contact any member of the Parish Council, listed in this Hinxton News, who will be happy to discuss it.

"Pint of Theatre" - Edinburgh Festival comes to Hinxtton

Saturday 14th October

£25 - Two Course Dinner & short Theatre Performance

We have been very fortunate to have picked up an opportunity with Inn Crowd who have government funding to support rural pubs as centres of communities.



It promises to be a fun evening, with a dinner followed by a short (50 minutes) performance by a talented professional performer, John Osborne, fresh from the Edinburgh Festival and BBC Radio Theatre, coming with a string of awards.

We have just enjoyed the first Pint of Theatre evening at our sister pub, The Black Bull, which was very well received and ensured that we will be booking some more.

Please book your tickets and pre-order your food in advance by phone or email .

6:30 - 7:15pm table bookings for 2-course dinner
8:30pm Performance

Bookings only - very limited numbers

Please call/email for more information or to reserve your place: alex@redlionhinxtton.co.uk 01799 530 601

Collective Switching

Next auction 10th October

The Cambridgeshire Energy Switch is a scheme that builds on the strengths of Cambridgeshire County Council, the District Councils and residents, and brings them together in order to get a cheaper energy tariff.

Taking part in the Cambridgeshire Energy Switch is free and without obligation. The more people that participate in the scheme; the more likely we are able to achieve cheaper energy prices.

The Cambridgeshire Energy Switch holds its next energy auction on Tuesday 10th October. The supplier who offers the cheapest tariff in the auction will offer registered households a new energy contract. From Monday 23rd October, personal offers will be sent out and households will be able to see straight away how much money they could save on their annual energy bill. They then decide if they want to accept the offer or not.

We are working with iChoosr to provide the energy auctions. iChoosr is an independent and completely impartial service provider. They aim to provide a better energy deal and also ensure that the switching experience is straightforward.

iChoosr do not supply energy, but across the country iChoosr have successfully switched over 650,000 families who have collectively saved nearly £6 million; making a difference to their household budgets.

Since 2014, Cambridgeshire families between them have saved over £363,000, with an average household saving of £217 a year.

There are a number of advantages with the Cambridgeshire Energy Switch:

- Signing up is free and without obligation.
 - You decide whether you wish to accept the offer or not.
 - You can count on the assistance and support of our Customer Care team before, during and after your switch.
- Please do not hesitate to contact us if you have questions about the Cambridgeshire Energy Switch. You can call us on 01223 715349 or send an email to energy.switch@cambridgeshire.gov.uk

For more information visit: <https://www.cambridgeshire.gov.uk/business/economic-development/energy-across-cambridgeshire/cambridgeshire-energy-switch/>

Claire Julian-Smith
Energy Manager
Cambridgeshire County Council Tel. 01223 715349

"BINGO for VEGETABLES"

Is back... in the Village Hall

6th October

eyes down 7:30

£2 entry + £1 game tickets

Fabulous tea or coffee &
Cake



Good Homes Needed



Old Upright Piano

**Free but you arrange
Transport/collection**

Contact Merv or Linda

530848

Lovely Two seater
sofa

Free

Contact

David Mills

530371



YOGA

"Breathe your way into autumn"

Fridays at 9.30am
Hinxton Village Hall

Term dates:

8th September – 8th December
Half term 27th October

Beginners and newcomers welcome

Please contact Zoë on 07956 644254

yoga@zoekirby.com

Keep up to date on

www.facebook.com/eatwellandbreathe



As we approach the end of the Summer, the big news from my constituency office is that we've moved!

I've been looking for some time for an office that was more visible and accessible for my constituents so I'm pleased we now have a high street location in Sawston. We have been made to feel very welcome and it was great to meet the local businesses who came to our "open house" afternoon. The new address is: 82A High Street, Sawston CB22 3HJ and you can call on 01223 830 037.



Health was on my agenda this month as I visited Addenbrooke's to shadow the bed managers in the operations centre. They have the challenging job of managing patient flow and beds across the whole hospital, 24 hours a day. Given the huge scale of the task and the challenges of our growing, ageing population and the great pull of Addenbrooke's reputation, they do an amazing job. I'd like to thank the whole team for allowing me to spend the morning with them and gain an insight into their pressures. Spending a morning in the hospital reminded me of the need for blood donations, so I popped round the corner to the permanent donation centre at Addenbrooke's. They are open 6 days a week and with free parking (and biscuits!) so there really is no excuse. It's honestly not that painful! Simply go to www.blood.co.uk or call 0300 123 23 23 to book an appointment. It really does save lives.

I continue to work hard to improve our transport infrastructure across South Cambridgeshire so am delighted our aspiration to build a railway station at Addenbrooke's has been given the thumbs up by Chris Grayling, Secretary of State for Transport. I shared our proposals with him just before the Summer recess and he swiftly grasped the need to ensure the Biomedical Campus reaches its full potential as a world renowned centre of excellence. I am confident this station will not only secure the local economy, but also ease congestion by removing

many of the cars who currently commute to the campus from our roads. I also continue to work closely with local communities to improve our rural public transport.

Whippet's recent announcement to reduce some of their services understandably caused a lot of concern amongst our parishes, so I was relieved that the County Council have retained most of South Cambridgeshire's services albeit with some changes. Bus provision remains a complex issue in rural areas and I encourage you to lobby your local County Councillor to ensure they are aware of your concerns and transport needs. You can find out who your County Councillor is on the Cambridgeshire County Council website. https://cmis.cambridgeshire.gov.uk/ccc_live/Councillors.aspx

Some of you contacted me about the County Council's consultation on Children's Centres, which is due to close on 22nd September. I met with the council's service director for children and families to gain a deeper understanding of the proposals and challenged her on the level of analysis that lay behind the proposals. I am currently digesting the detailed data and assessments that I have since been sent and will be fully scrutinising this information to ensure I am happy with the potential changes. If you would be affected by the proposals and want to have your say, you still have time to submit to the consultation at www.cambridgeshire.gov.uk/residents/children-and-families/children-s-centres/children-s-centres-consultation/ Alternatively there are still drop-in events at the Children's Centre in Papworth Everard on 13th September from 6.30pm to 8pm or at the Children's Centre in Bassingbourn on 14th September from 5pm to 7pm. My next constituency surgery is on Saturday 21st October from 10am to 12pm at the Melbourn Community Hub, 30 High Street, Melbourn SG8 6DZ. This will be my usual drop-in type of event with no appointment necessary. However I am also trialing an appointment-only surgery at the new office in Sawston on Friday 29th September for constituents with more sensitive issues who need a private environment. Please call my office to book. Details of all the upcoming surgeries can be found on my website at www.heidisouthcambs.co.uk/residents-drop-surgeries. You'll also find further information about my work and news stories there.

To contact me please email heidi.allen.mp@parliament.uk.

You can also phone my Westminster Office on 020 7219 5091 about national issues or my constituency office on 01223 830 037 to raise local concerns.

See you next month!

Bassingbourn Primary School

Rhumpi, Malawi – August 2017

Last year parents, staff, pupil and friends of our school fundraised to allow us to renovate Bumba Primary school in Malawi. In addition, our trip included training four schools how to use a mini projector run via a solar panel and car battery. These schools have never had equipment like this before and the communities had not seen televisions or films before; this was an opportunity to change that.

After a long 28 hour journey via two planes and a hair raising car drive for 8 hours to northern Malawi, we arrived in the dark at The Matunkha development trust. We were met at a large gate and told they were shut. After a difficult exchange of words, it was agreed that

we were in fact expected to be there and we were let in up a very dusty, bumpy, dirt track. The roads we had travelled on were mostly empty of vehicles except for a few lorries carrying sugar cane and the odd manic driver overtaking on blind bends at great speed. There were no street lights anywhere in the whole country we travelled in. Adults and children walked everywhere as they did not own transport and would often be walking at the side of the road in the pitch black so driving was interesting. The development trust we were staying at focused on developing healthcare, education and agricultural programs. They supported us in our days that we were there, especially in finding tools to assembly car batteries to solar panels to run the mini projectors we took out. We stayed in fairly robust huts and were cooked for every day by local men who worked at the centre. Interestingly if you wanted a coke or a beer you had to be able to give the shop an empty bottle before they would give you a

new one. A great recycling culture that we could learn from.

Our first full day was long and incredible. We trained teachers at the centre how to use the equipment and showed them their new tablet devices that all of their curriculum had been put on to, including their text books. They loved the Maths APPS more than anything and had to be encouraged to stop using them so we could continue with the training! We all ate lunch together and learned just how fortunate we were at our school. One school had 1800 pupils and seven teachers! Most children did not go on to secondary education because they had to pay and

they could not afford it. Families try to put their eldest child through school so that they can get a job and send money back to the family. They did not moan once during our time there.

We spent the rest of our trip visiting the schools and seeing them put the



equipment together without help and actually teaching a lesson. It was like being in Victorian times in terms of the way children were taught. In fact, we also saw many children playing outside with a hoop and stick. We gave feedback on teaching styles and tips for improving learning which they welcomed. Each community had a chief who came and spoke to us thanking us for our help along with the whole community. They gave us popcorn and ground nuts in thanks – more than we could eat, but a generous gift from them when they had so little. I cannot tell you how thankful I am since the trip. We have so much here at home and so much resource. Harvest is a time to be thankful for our food but also for our clean water and education system that supports our people to make our country what it is.

Sue Brown

SPONSORED CYCLE RIDE FOR CAMBRIDGESHIRE HISTORIC CHURCHES TRUST



Andrew and I were the only Hinxtion volunteers available to join this year's sponsored cycle ride which took place on Saturday 9th September. We started at 10.15 a.m. from Hinxtion Church (as the photo

demonstrates) with a cheery send-off from Julie Baillie, and managed to dodge the local showers until we returned to the church at 3.30 p.m. to a lovely 'welcome home' from Ros Smith, just in time to avoid a downpour! When it cleared up, we then peddled to Ickleton to reach our 20th church! We had a lovely ride with some notable welcomes and delicious cakes too (!), and rode to Pampisford, Babraham, Sawston, Stapleford, the Shelfords, Hauxton, Harston, Newton, Thriplow, Whittlesford, Duxford and Ickleton, and included URC, Roman Catholic and Baptist churches too. We calculate that we cycled between 20 and 25 miles.

Half the money we raise will be directed to Hinxtion Church and if any of you would like to sponsor us, it's not too late!

(The deadline for sending our cheque is 31st October.)

Thank you!

Andrew and Virginia Walker

Email: virginiamwalker@btinternet.com

tel: 530360

Level Crossing on the road from Hinxtion to Ickleton

will close to vehicles, cycles and pedestrians from
14th - early 23rd October

Hinxtion - Duxford level crossing is unaffected. ACCESS TO THE LEVEL CROSSING Generally, crossing at this point will be maintained but may be subject, from time to time, to some minor diversions, which will be extensively signed and marshalled by dedicated members of our work force. In order to facilitate the final stages of works a full road closure will be required mid-October 2017 when our contractor will work continuously through this period.

The level crossing will not be accessible to pedestrians or vehicles during the period mentioned above. This is to ensure the safety of our site teams working next to/on the railway track.

ROSEMARY'S RAMBLINGS

This is one of the most beautiful times of the year as the leaves change colour and the garden puts on a final show of flowers before the return of winter. Don't be sad at the thought of summer's end, surely just looking at the wonderful array of extraordinarily amazing colours will cheer you and there is lots to be getting on with.

This is the perfect month for planting trees and shrubs while the soil is damp and still warm, also if you need to move a large shrub now is the best time. Keep planting spring bulbs and plant up containers and hanging baskets for next spring and summer. Collect seeds for spring sowing of your favourites and store them in a cool, dark, frost free place. October is an ideal time for sowing sweet peas but protect with cloches. Also clean the greenhouse glass in order to get maximum daylight.

To warm yourself up on a chilly day rake up fallen leaves and other debris from the borders and compost or make leaf mould. Remember to burn or bin any evidence of black spot or mildew on leaves. Above all enjoy the colours and start to plan for spring 2018.



PETERHOUSE CHOIR

A Concert of Carols and Christmas Music



DECEMBER 2nd 7.30pm

HINXTON CHURCH

Free Entry

Drinks & Nibbles to follow the Concert

All donations will be shared with the Choir

CHILDREN'S CHRISTMAS PARTY



Sunday 10th December at 12.45pm-3p
Hinxtton Village Hall
Mr Marvel Magic Show and Disco 1-3pm



Father Christmas will also be making an appearance!
All ages of children from our village will be catered for

Please RSVP to Sarah & Tim Robinson

01799 531678

t.robbo109@yahoo.co.uk

Please contact Sarah-Jane Pearson If you would like to provide some party food.

sarahjpearson@btinternet.com

This is a free event thanks to the Anne Howsden Trust who have kindly donated money to Hinxtton Toddlers charity which runs the Children's Village Party.

SANGER INSTITUTE'S 25TH ANNIVERSARY

2018 will soon be here and with that the Sanger Institute's 25 anniversary. October 3rd 2018 is our official birthday and you're probably thinking we're a little premature announcing this in our nearest neighbour's newsletter.

However, instead of the usual birthday parties which we were planning,, we will celebrate with a scientific project to sequence the genomes of 25 UK species (and local species where possible) to celebrate the science we do, and also as a small (*very small*) contribution to conservation of UK species.

To narrow down from the thousands of species in the UK to just **25** we asked staff and chatted with specialist wildlife groups and the Natural History museum and have come up with five categories – cryptic, flourishing, floundering, iconic, dangerous, with a range of UK species in each.



We've created a short animation about the project here

https://www.youtube.com/watch?v=v0Qsf9NXbu4&feature=youtu.be#_blank

Part of this is also a public vote, and this is where you can ask questions, share your views and vote for your favourites on the final list through our collaboration with 'I'm A Scientist Get Me Out Of Here'

<https://25genomes.imascientist.org.uk/>

As we select the final list and begin sequencing we hope that you'll also join us in a citizen science project to aid the analysis and hopefully inspire more people to pursue science careers [much more to follow in a future newsletter].

We anticipate that by sequencing these 25 genomes and making them available to the research community they will lead to significant follow-on studies in population genetics, evolution studies, biodiversity management and conservation, and climate change effects.

Finally, last year we were lucky enough to be awarded some seeds from the famous apple tree which inspired Sir Isaac Newton's revolutionary theories about gravity. Our grounds team have grown this seedling, and as it matures the apple tree will feature in a 25th Anniversary Garden alongside medicinal plants.



Seedling grown from Sir Isaac Newton's famous apple tree

Julia Wilson

September 2017

Notes from the Parish Council Meeting

North Uttlesford Garden Village

The six local Parish Councils have each sent responses to the Uttlesford Consultation. There have been meetings with Cllr Rolfe, representatives have attended the Grosvenor presentation, and there have been 2 meetings with SCDC. Tony Orgee's and the SCDC's response has also been strong. The local SCDC PCs agreed they would only meet with Grosvenor Estates, the agents for the land-owners, once our submissions had been read. The County Council will be meeting to discuss the issue in October. There are now 5 large banners put up in the village. The Wellcome Trust has submitted a useful set of questions. The issue of ground-water is becoming a strong issue. Heidi Allen is being kept in the loop. It is intended to arrange a meeting with her along with representatives from the other local PCs. The PC has thanked SCDC for their consultation with us over their response to the planning proposal at a time when they were already very busy with other planning matters.

Smithson Hill Agritech

A recent article in Sawston News was arguing for this. A planning application is likely to be submitted shortly.

War Memorial

This has now been satisfactorily repaired. The cost is £1,770. The bill has been sent to the company whose van damaged the plinth. We will pay the invoice and try to recover the cost from the company.

Wellcome Trust Liaison Meeting

Lordship Farm has now been sold and is to be renovated into a family home.

The young trees in Knights Close that have died will be replaced.

A quote has been received for removing the lime trees at the west end of the allotments. Martin Fordham has been consulted on this. Although regular trimming would be the preferred option, it may be better for the allotments if the trees were not there shading the plots. This will be discussed at the next Liaison meeting. The ivy has now been removed from the flint wall. Perspex sheets are to be put on the wall to protect the restored flint wall. We need to ascertain ownership of the flint wall which faces the playground.

A contractor will be replacing the small wooden bridge over the sluice.

Iron Bridge

This has now been blocked for more than a year. Wellcome Trust accepts ownership and has proposed to put the cost of removal towards renovation. It has also suggested an annual rent be paid for the permissive paths licence which would cover maintenance costs of this sort on a regular basis. Progress on this will be discussed at the next Liaison meeting with the Trust.

Village signs

We have contacted someone to refresh the village signs, which should be done this year.

Playground report

A new lock has been put on the gate as the previous one had to be cut off as it couldn't be opened. The flint wall needs some repairs made once ownership is ascertained. The grant from SCDC has now been received, this will be used to pay for the baby swings. The plaques on the wall acknowledge this grant.

Local Highway Initiative

A bid will be submitted for partial renovation of the railings on Ickleton Road which run alongside the river; some are bent and the wooden posts are rotten. Speeding issues were raised but this may be something we can contact both Ickleton and Duxford about, to see if something can be done as a joint proposal.

Community Gritting scheme

This was discussed. It was felt that asking residents to grit the footpaths was an unacceptable way for the CC to cut costs. The health and safety and training requirements were cumbersome. It was decided not to take part in this.

Sawston Trade Park Development

Hinxton PC had consulted with both Sawston and Pampisford PCs on this. Our response was that, although there was no objection in principle to development of a brownfield site, there were objections to the scale and density of the proposed development and to the increased traffic implications on this already congested road.

Flooding

This continues to be a problem. Wellcome Trust says that it has done everything and Highways say it is not their problem. When the drains were cleared 2 years ago this did improve the situation, however this needs regular maintenance to stop the flooding. Clerk to contact Highways again.

Allotments

There are 2 plots now available. There is one person on the waiting list and they will be offered one plot, the other will be advertised in the Hinxton News. The land is owned by Wellcome Trust, and Bidwells will be looking at the contract with the PC with the intention of drawing up a new one, to be ready for the annual rent payments in November. This will be discussed at the next Liaison meeting with Wellcome.

Gt Abington Neighbourhood Plan

PC to write a letter of support for this plan whose aims include:

- a) seeking to preserve the rural character of the landscape beyond the A11
- b) catering for the less well-off on land which could be turned into a pricey housing estate

Huntsman Emergency Planning Meeting

WB attended this safety briefing along with representatives from Ickleton and Duxford PCs. The outcome of the meeting was that the maximum potential damage of an accident is small, the probability is low, and the procedures in place are good.

Other matters–

Two people had been interested in the old safe, but both decided it was too heavy to be moved. It will now stay and be used for storage.

Car park signs have now been erected; thanks to Julia Lowndes for arranging these.

It was asked if there was anyone acting as the voice of the allotment holders. If a new contract was going to be drawn up then it would be good to have allotment holders' input. The new agreement would be in two stages, one agreement between Wellcome Trust and the Parish Council, another between the Parish Council and individual Allotment holders.

It was also asked whether an Emergency Plan existed in the Village. There is one in place, however it is probably out of date and Clerk will look into this and update it.

Finance

Accounting statement read out and approved.

Current position of Bank Balances at 31st Aug 2017

Current A/C : £8,766.46

Business A/C: £11,022.81

Bridge A/C: £2000.

Litter bin in Playground is coming loose, Clerk to contact SCDC.

The level crossing between Hinxton and Ickleton will be closed between 14th and 22nd Oct.

The school bus which takes children from Hinxton to Duxford has changed its route- it picks up from Hinxton, then Ickleton, goes past Duxford school to Duxford, a journey of 45 minutes, more if traffic is bad. 45 mins is just within the maximum officially approved amount of time for a journey but is too long, especially for the younger children.

This to be monitored and any problems will be discussed and if necessary complained about,

Date of next Meeting : 13th November 2017

Usually there is little to report for the late July and August period as few, if any council meetings are held. However this year is an exception because of the Uttlesford District Council consultation on its Local Plan. Together with the Chairs of a number of local parish councils I signed a joint letter to the Leader of Uttlesford District Council (UDC) critical of that council's Local Plan proposals, attended a meeting with the Leader of UDC and attended a meeting with South Cambridgeshire District Council (SCDC) planning policy staff to consider the SCDC response to Uttlesford.

I then attended a meeting of SCDC's Planning Portfolio Holder to formally consider SCDC's formal response. I made four specific comments at this meeting in relation to the draft response set out in the agenda papers:

- The comments made in relation to aquifers and water supply should be strengthened by specific reference to the designation of the relevant area as a Groundwater Source Protection Area;
- That residents of a new North Uttlesford Garden Community (NUGC) who would travel to work in or near Cambridge would not all use the A11 and A1307 as many might well work in the West Cambridge area and would therefore be far more likely to access via the M11 at Duxford;
- Wording re rat running through (in alphabetical order: Duxford, Hinxton and Ickleton) should be strengthened;
- The slow rate of build out for a NUGC set out in the draft Local Plan would mean that for many years the new community would not be viable in size (for example, in relation to shopping facilities, etc) and hence initial new residents would be likely to use facilities in nearby Saffron Walden, and therefore having an impact on that town.

All these points were accepted.

District Councillor David Bard (Sawston) reinforced and added to these comments particularly in relation to the aquifer and water supply and District Councillor Cuffley (Sawston) pointed out the lack of any reference to high quality public transport in relation to the proposals. The Planning Portfolio Holder (Councillor Robert Turner) accepted all these points and they should be built into the official SCDC response. It was also stated at this meeting that Cambridgeshire County Council would consider its response at a Committee meeting in early October. This date may come as a surprise since the consultation period ended on 4 September. However, councils often come to an agreement for views to be submitted after the formal end date for a consultation to fit in with the responding council's democratic arrangements, that is, with reference to when that council's relevant committee meetings are scheduled.

I hope these comments are helpful. My own submitted comments are in a separate attachment.

Tony Orgee, District Councillor for Hinxton



TIM PHILLIPS & Co. Accountants

Independent, specialist service for:
**Small Business • Self Assessment
Personal Taxation**

Free initial consultation – no obligation
EASY, FREE PARKING

Copley Hill Business Park, Cambridge Rd., Babraham
Off A1307 between Wandlebury and Babraham

Tel: 01223 830044. www.tpaccounts.co.uk

Binwash

The local wheelie bin cleaning service

Schools - Pubs - Restaurants - Shops
Households - Village Halls

- . Try us for as little as **£3** per month
- . Professional equipment
- . 4 weekly schedule or one-offs
- . Same day as waste collection

FREE!
First Clean
to new
customers



Environmentally approved bio-degradable products.

01799 529899

www.binwash-uk.com

enquiries@binwash-uk.com

Art & Craft Exhibition

Hinxton Church



Saturday 4th November

10am-5pm

Sunday 5th November

11am – 4pm



The DX Club (a registered Charity) are running a Holiday Club during the October Half Term
(Monday 23rd October to Friday 27th October.

We are also registered with Ofsted.

We are open from 8am to 6pm each day at **Hinxton Village Hall**.

We welcome children aged between 4 and 14 years Old

Costs are £28 for a full day and £17.50 for half day. Early Bird discounts are available.

For further details please contact Lisa Wood on thedxclub@hotmail.co.uk or 07855 225267.

HINXTON PARISH COUNCIL

William Brown (Chair)
01799 530372
07791-399318
william.brown@econ.cam.ac.uk

Dick Jones
01799 530107
valdours@aol.com

Steve Trudgill
01799 530691
07930 248897
stt21@cam.ac.uk

Julian Bright
01799 531440
07808 588448
julian.bright@me.com

Ann Angell (Clerk)
01799 531827
07890 512309
hinxtontpc@gmail.com

Jane Chater
01799 530245
janechater@gmail.com

Fiona Marshall
01799 530425
fmih100@gmail.com



October Greetings to Hinxton Villagers
from all at The Red Lion Inn

Dates and Events coming up for your diary:

Next Village Night – “Pint of Theatre” with Dinner

Saturday 14th October

John Peel's Shed – John Osborne

(inncrowd.org.uk)

(performed at prior Edinburgh Festival – sell out)

£25 tickets: 2-course dinner + 50 minute show

Limited numbers – first come ...

Email pub or see website for more details

(The Pint of Theatre last month at The Black Bull was a huge success and we are booking more)

(Next Jazz Night at The Black Bull Balsham – Friday 27th October)

Our Christmas menu is out and on the website for those needing to book a particular date, time or larger numbers.

We look forward to welcoming you & your friends.

Kind regards Alex, Nikol, Janice, Chris and the teams

01799 530 601 info@redlionhinxtont.co.uk
www.redlionhinxtont.co.uk

HINXTON VILLAGE HALL HIRE RATES

Current rates are as follows for residents

(non residents in brackets)

Per session (9am - 1pm) (1pm - 5pm) (5pm - 11.30pm) or 10.30pm on Sunday **£30 (£45)**

Saturday evening **£60 (£85)**

Short meetings **£12** (use of hall only)

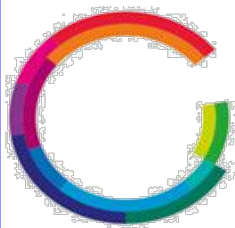
Discounts may be available for block bookings and charitable events.

For these and details of business-use rates

Contact Julia Lowndes

Tel:01799 530785 julia.lowndes@btinternet.com

www.hinxtonvillagehall.co.uk



**WELLCOME
GENOME
CAMPUS
PUBLIC
ENGAGEMENT**

Exhibition: Hidden Lives: A Story of Discovery (June – December 2017)

Booking required: Entry is free for both events but booking is required: get your ticket online at bit.ly/hidden-lives

Where: Wellcome Genome Campus Conference Centre

Talk: Revealing the past and present

Wednesday 11 October, 6pm

Join Dr Marc Haber and Dr Michal Szpak from the Wellcome Trust Sanger Institute to discover how DNA research is revealing more about us; from our past and our present. There will also be the opportunity to visit our current exhibition, Hidden Lives.

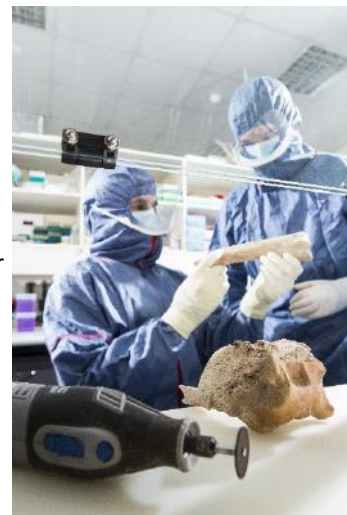
Half-term family fun

Drop in Saturday 21 October, 12-4pm

Join us for half-term family fun at the Hidden Lives exhibition! Dig for artefacts like an archaeologist, extract DNA from fruit, and find out about the people who lived in our area thousands of years ago. There will be fun for everyone!

The Hidden Lives exhibition at the Wellcome Genome Campus displays the remains of the some of the individuals found at excavations onsite over the last 25 years, alongside artefacts that help us understand what sort of lives people led on the banks of the River Cam thousands of years ago.

These discoveries offered the exciting opportunity to apply the scientific speciality of the Campus to these ancient remains. Researchers were able to extract DNA and then sequence the skeletons' genome, the unique genetic code carried by all living things. Visit the exhibition and discover what this genetic analysis revealed about the population of the East of England in the Iron Age and Anglo-Saxon period – and what this shows us about the population today!



HINXTON EVENTS ~ October

Notable Future Dates

| | | | |
|------|-----------|--|--|
| 1st | Sunday | Hinxton Watermill Open for the last time this year 6.30pm Evensong (BCP) <i>Hinxton</i> | |
| 2nd | Monday | | |
| 3rd | Tuesday | | |
| 4th | Wednesday | | Nov 4/5th p.21 Hinxton Art & Craft Exhibition |
| 5th | Thursday | | |
| | | H I N X T O N W A L K E R S 9:30am | |
| 6th | Friday | Bingo for Vegetables @7:00pm | Nov 4th p.8 FIREWORKS & BONFIRE NIGHT 1st Whittlesford and Duxford Scout Group |
| 7th | Saturday | | |
| 8th | Sunday | 8.00am Holy Communion 10-12 VILLAGE HALL BACON BRUNCH | Nov 8th p.9 FREE FIREWORK DISPLAY AT THE GENOME CAMPUS! |
| 9th | Monday | | |
| 10th | Tuesday | | Nov 9th P.7 Charity Shopping Evening |
| 11th | Wednesday | Coffee Morning at Village Hall 10am | |
| 12th | Thursday | | |
| 13th | Friday | | |
| | | Railway crossing closed until 23rd. p.14 | Nov 11th Festival of Remembrance |
| 14th | Saturday | JOHN PEELE'S SHED A meal & play at The Red Lion | Nov 13th Parish Council Meeting |
| 15th | Sunday | 10.00am All Age Harvest Thanksgiving & Parish Communion <i>Hinxton</i> | |
| 16th | Monday | | Dec 2nd PETERHOUSE CONCERT OF CAROLS |
| 17th | Tuesday | | |
| 18th | Wednesday | | |
| 19th | Thursday | | |
| 20th | Friday | | |
| 21st | Saturday | | Dec 6th Bingo for Vegetables Xmas Special |
| 22nd | Sunday | 8.00am Holy Communion (BCP) <i>Hinxton</i> | |
| 23rd | Monday | | |
| 24th | Tuesday | | |
| 25th | Wednesday | HOLIDAY CLUB 23rd-27th see p.21 | Dec 10th Hinxton Children's Christmas Party |
| 26th | Thursday | | |
| 27th | Friday | | |
| 28th | Saturday | | |
| 29th | Sunday | 10.30am 5 Parishes Service <i>Whittlesford</i> | Dec 26th Boxing Day Walk |
| 30th | Monday | | |
| 31st | Tuesday | | |
| 1ST | Wednesday | | |
| 2nd | Thursday | All Souls Day 7.30 St Peter's <i>Duxford</i> | |